




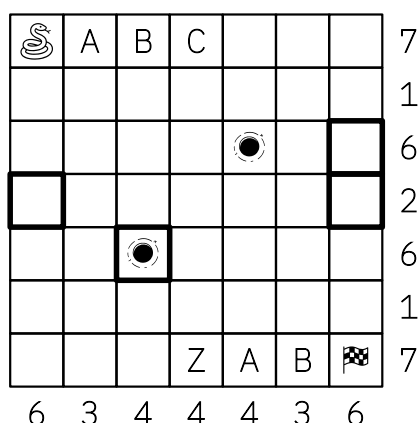


Subnivean Snake



Subnivean Snake Rules

- The snake's orthogonal journey begins and ends at the indicated locations:  → 
- The number of visited cells in each row and column are given.
- The snake cannot visit cells adjacent (orthogonally or diagonally) to those already visited (with the exception of the two cells immediately prior to the current one).
- At burrows () the snake can dig and reemerge elsewhere traveling in the same direction.
- When reemerging, the snake travels straight exactly as far it travelled prior to burrowing.



= HINT

