

Tidying Up (Solution)

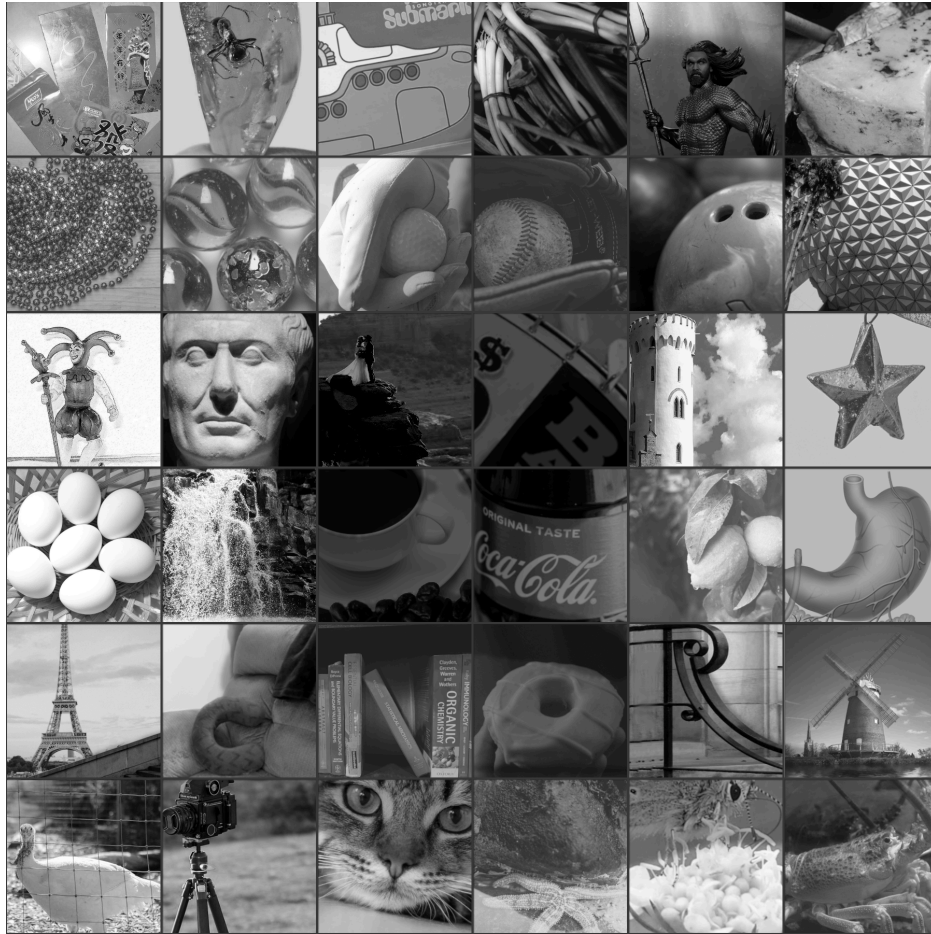
Eshan Mitra, Jay Qi, and Alex Walker

On the first page, we are given 7 sets of things in sorted order:

- Things with a color in the name, in red to violet spectrum order (scarlet, orange, green, teal, purple)
- Things with legs, ordered by number of legs
- Images that look like letters, in alphabetical order (D, I, S, T, V)
- pH, from basic to acidic
- Spherical things, ordered by increasing size
- Tarot cards, in deck order (empress, chariot, death, devil, world)
- Holidays, in calendar order (MLK day, St. Patrick's Day, Canada Day, Halloween, Christmas)

On the second page, we are given 36 images. Group these images into 6 rows of 6, where each set follows one of the horizontal rules from the first page. When we do so, the first image of each row is a reference to a holiday (the vertical rule), so we sort the rows in that order.

This produces the following arrangement in the grid:



Zooming out, this is a picture of the **SORTING HAT**.

For completeness, here are the identifications of the images. Note that the puzzle gives them in alphabetical order to help confirm identifications, although identifying them all by name is not strictly necessary to complete the puzzle

- AMBER
- AQUAMAN
- BASEBALL
- BEADS
- BLUE CHEESE
- BOOKS
- BOWLING BALL
- BUTTERFLY
- CAT
- COCA COLA
- COFFEE
- DONUT
- EGGS

- EIFEL TOWER
- EMPEROR
- FOOL
- GOLF BALL
- GREEN ONION
- LEMON
- LOBSTER
- LOVERS
- MARBLES
- NECK PILLOW
- RAILING
- RED ENVELOPE
- SPACESHIP EARTH
- STAR
- STARFISH
- STOMACH
- TOWER
- TRIPOD
- TURKEY
- WATER
- WHEEL OF FORTUNE
- WINDMILL
- YELLOW SUBMARINE

And here is how the images are entered into the final grid.

RED ENVELOPES (Lunar New Year)	AMBER	YELLOW SUBMARINE	GREEN ONION	AQUAMAN	BLUE CHEESE
BEADS (Mardi Gras)	MARBLES	GOLF BALL	BASEBALL	BOWLING BALL	SPACESHIP EARTH
FOOL (April Fools' Day)	EMPEROR	LOVERS	WHEEL OF FORTUNE	TOWER	STAR
EGGS (Easter)	WATER	COFFEE	COCA COLA	LEMON	STOMACH
EIFEL TOWER (Bastille Day) (A)	NECK PILLOW (C)	BOOKS (N)	DONUT (O)	RAILING (R)	WINDMILL (X)
TURKEY (Thanksgiving) (2)	TRIPOD (3)	CAT (4)	STARFISH (5)	BUTTERFLY (6)	LOBSTER (10)

Author Notes

The final extract image was produced with a combination of clever source image selection and some conventional photoshopping. This included adjusting whole-image brightness/contrast, applying shaded overlays to part of the image to emphasize the desired shading, and in a few cases adding / removing whole elements from the image. We hope that it was a cool reveal to have the final image pop out.